

# The Worcester Greenstar CDi Classic combi

Our Greenstar CDi Classic boiler is our top of the range combi boiler offering the highest levels of hot water comfort. This boiler has set the benchmark within the industry for efficiency and reliability and is suitable for homes with up to two bathrooms.

## Why install a Greenstar CDi Classic combi?

- Highest hot water flow rate of the Greenstar combi wall mounted range
- Instantaneous hot water, always available
- Larger two bathroom properties can be supplied by higher output options
- Wide choice of controls enables greater comfort and economy
- Low energy pump reduces electrical usage
- Inbuilt keyless filling link making it easy to refill your system if needed



**Trustpilot Rated 5 Stars**  
Our customers have consistently rated us 5 stars on Trustpilot.co.uk\*\*



**10 Year Guarantee**  
Up to 10 years guarantee on all Worcester gas boilers when fitted with a Greenstar System Filter



**Royal Warrant**  
We are honoured to have received a Royal Warrant in recognition of supplying goods to Her Majesty The Queen



**BOSCH**  
Invented for life

**Part of the Bosch Group**  
All Worcester products are manufactured with Bosch levels of quality and reliability as standard



[worcester-bosch.co.uk](http://worcester-bosch.co.uk)



\*Terms and conditions apply. \*\*From 1,306 reviews on Trustpilot as of 2nd October 2017

## Technical data

Model		29CDi Classic	34CDi Classic	38CDi Classic	42CDi Classic
Clearances	Above flue	30mm	30mm	30mm	30mm
	Sides	5mm	5mm	5mm	5mm
	Below	200mm	200mm	200mm	200mm
	Front	20mm*	20mm*	20mm*	20mm*
Flow rate at the hot water tap (35°C)		12.3 l/min	14.3 l/min	16.4 l/min	17.2 l/min
Output kW to central heating (CH)		7.7kW - 30kW	7.7kW - 30kW	9.4kW - 30kW	9.4kW - 30kW
Modulating control		✓	✓	✓	✓
Integrated filling link		✓	✓	✓	✓
Condensing in domestic hot water		✓	✓	✓	✓
Intelligent controls		✓	✓	✓	✓

\*20mm from a removable cupboard door, 600mm from a fixed surface for servicing. Same clearances for ventilated and unventilated compartments.

### Control options

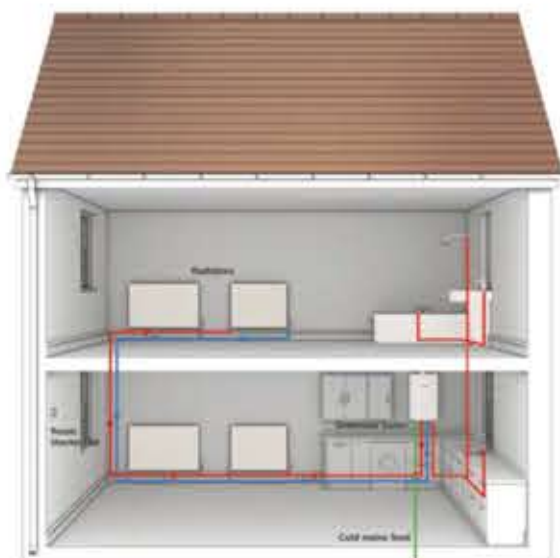


### Accessories



### Boiler dimensions

The Greenstar CDi range is the perfect size to fit between your wall-mounted kitchen cupboards.



### Know your system

Combination, or 'combi' boilers, heat water directly from the mains when you turn on a tap, so you won't need a hot water storage cylinder or a cold water storage tank.

For more information on our award winning gas range, visit [worcester-bosch.co.uk](http://worcester-bosch.co.uk)

